

BLUE PRINT OF
**ENGINEERING
DREAMS**





ABHISHEK KUMAR

Founder and Managing Director
Ayoleeza consultants Pvt. Ltd.

Ayoleeza, incorporated in 2006, is a multi-disciplinary firm that specializes in the infrastructure sector, offering comprehensive end-to-end engineering consultancy solutions. With over 18 years of experience, our dedicated and skilled team excels at providing Civil Engineering Consultancy Solutions across various sectors. Our strengths lie in Design, Engineering, and Project Management, ensuring client satisfaction and community service.

Thanks to our diverse experience and innovative approach, we are fully committed to meeting project objectives. Our primary goal is to contribute to infrastructure development, leading us to provide specialized advisory consultancy services in areas such as Roads & Highways, Bridges, Traffic & Transportation, Railways & Metros, Urban Infrastructure, Tunnels, Environment, and Structures, both in India and neighboring countries.

The visionary leadership of Ayoleeza's key officials emphasizes the importance of sustainable development to protect the environment and create a positive impact globally. Today, the engineering industry recognizes the necessity of constructing solutions that do not harm the planet or its inhabitants. Ayoleeza is aligned with this principle, actively promoting a healthy and sustainable environment.



ABOUT US



Ayoleeza Consultants Pvt. Ltd. Provides comprehensive Civil Engineering Solutions from Conceptualization, Design to Project Management.

Established in 2006, Ayoleeza Consultants Pvt. Ltd. is a leading ISO 9001: 2015 certified engineering consultancy firm. We offer comprehensive Civil Engineering solutions across various infrastructure sectors, from highways and bridges to railways and urban structures.

We are a member of the Consulting Engineers Association of India (CEAI) and collaborate with the International Federation of Consulting Engineers (FIDIC), demonstrating our commitment to upholding the highest industry standards and collaborating with a global network of professionals.

Our team of experts ensures client satisfaction through innovative design, project management, and specialized engineering consultancy services. We are dedicated to serving the community and responding to your project's objectives with our extensive experience
Let us help you build a better tomorrow.





OUR MARKETS

OUR NETWORK

Jammu & Kashmir | Ladakh | Punjab | Himachal Pradesh | Uttarakhand | Haryana | Rajasthan
Madhya Pradesh | Uttar Pradesh | Bihar | Jharkhand | West Bengal | Odisha | Maharashtra
Telangana | Karnataka | Kerala | Assam | Arunachal Pradesh | Manipur
Dhaka, Bangladesh

MISSION & VISION



MISSION

Our Mission is to be the trendsetters in sustainable and environmentally friendly infrastructure development, setting examples in design, project management and supervision and building partnerships that strive to give innovative solutions to make the world a better place to live.

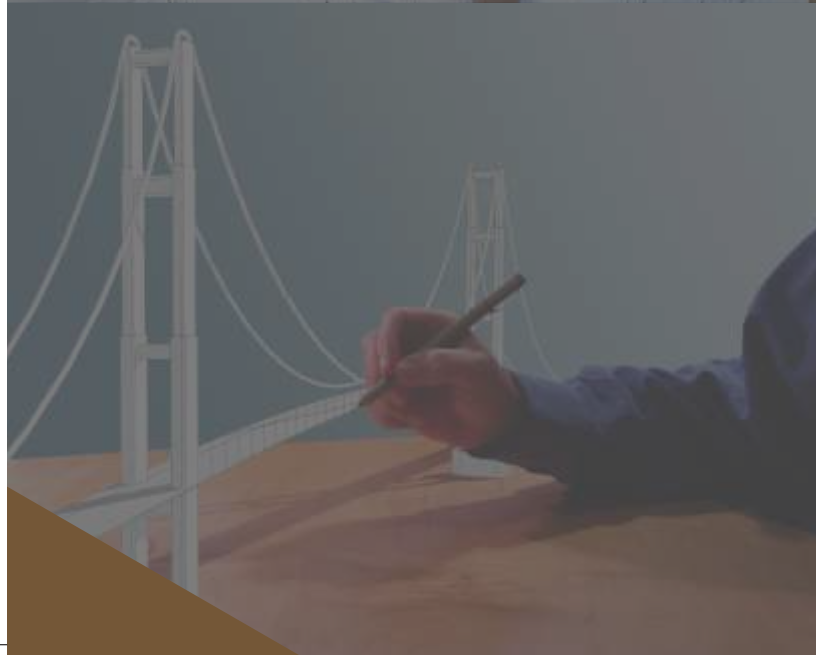
VISION

Our vision is to create a world where infrastructure generates opportunity for everyone and fortifies the community, by improving infrastructure and sustainability of our planet.





SPECTRUM OF
SECTORS WE SERVE



WHAT WE DO

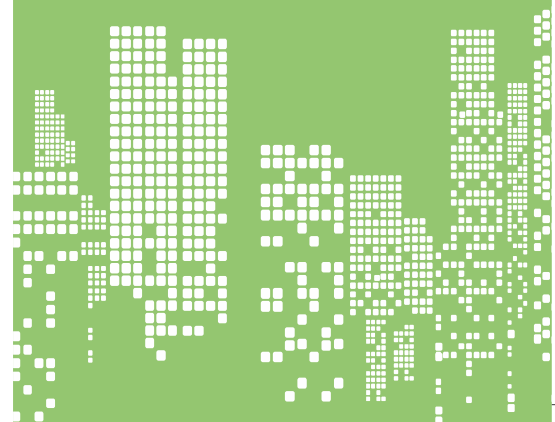
Sectors

- Roads & Highways ● Bridges & Structures
- Tunnel ● Rail & Metro ● Waterway
- Buildings & Architecture ● Traffic & Transportation
- Airport Engineering ● Urban Planning



Services

- Preliminary Investigation & Feasibility Studies
- Detailed Engineering Design and Design Review
- Detailed Project Report
- Project Management
- Survey & Planning
- Financial Management Assessment and Risk Analysis
- Economics and Financial Analysis
- Procurement Plan and Tender Documents
- Construction Supervision
- Quality Control and Quality Assurance
- Technical Capacity Building
- Institution Capacity
- Environmental & Social Impact Assessment/Audit
- Audits on Road Safety
- Training / Capacity Development
- Advisory Services





OUR
ESTEEMED
ALLIANCES

Our Alliance \ Empanelled with Public Sector **Bodies & Registration**



MORTH: Ministry of Road Transport Highways
(In various categories) Govt. Of India



BSRDC: Bihar State Road Development Corporation Ltd.



RCD: Road Construction Department (In various
categories) Govt. Of Bihar



BRPNL: Bihar Rajya Pul Nirman Nigam Ltd. Govt.
Of Bihar



GSIDCL: Goa State Infrastructure Development
Corporation Limited (Govt. of Goa)



KSUDA: Kerala Sustainable Urban Development
Project (Govt. of Kerala)



AAI: Airports Authority of India



CEAI: Member of Consulting Engineer Association
of India



FIDIC: International Federation of Consulting
Engineers



RCD: Road Construction Department. Government
of Jharkhand



NHAI: National Highway Authority of India



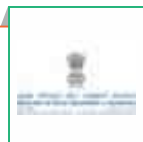
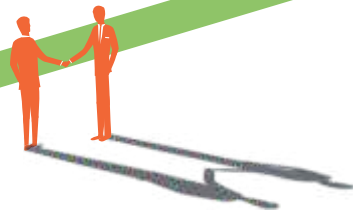
EXIM BANK: Export-Import Bank of India

OUR CLIENTELE

Ayoleeza offers expert Civil Engineering Consultancy Services across a wide range of infrastructure projects, including roads, bridges, transportation systems, railways, airports, tunnels, and urban structures. We prioritize understanding our clients & needs to deliver tailored, value-added solutions quickly and efficiently, leveraging our extensive knowledge and experience.

Partnering with various government and infrastructure bodies in India, Ayoleeza is recognized and Impaneled by several government departments and agencies. We are proud members of the Consulting Engineer Association of India (CEAI) and are associated with the International Federation of Consulting Engineers (FIDIC).

Our commitment to quality is unwavering. Ayoleeza Consultants Pvt. Ltd. is ISO 9001:2015 Certified, ensuring our services meet our clients & highest standards and requirements.



Ministry of Road Transport and Highway



National Highway Authority of India



State Highway Authority of Jharkhand (SHAJ)



RCD (Govt of Jharkand)



Exim Bank



Asian Development Bank



BMRCL



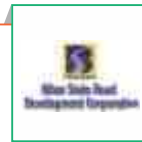
PWD Telangana



MSRDC



CRWD



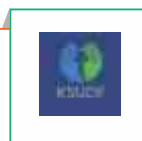
Bihar State Road Development Corporation



Government of Goa



Madhya Pradesh Road Development Corporation Ltd



KSUDP (Govt of Kerala)



IIT Roorkee



Airports Authority of India



National Highway Infrastructure Development Corporation Limited



Indian Academy of Highway Engineers



Pradhan Mantri Gram Sadak Yojana



Border Roads Organisation



PWD (Govt. of Uttarakhand)



Ircon International Ltd.



Bihar Rajya Pul Nirman Nigam Limited



PWD (Govt of Haryana)



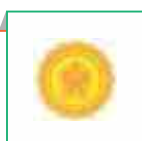
RCD (Govt of Bihar)



PWD (Govt of Punjab)



Government of Odisha



Maharashtra PWD



World Bank



Government of Kerala



Indian Railways



Govt. of West Bengal



Roads and Highways Department, Govt. of Bangladesh



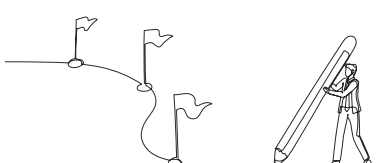
GSIDC (Govt. of Goa)



KRDCL



Key Milestones



With years of experience, gaining excellence and expertise in our areas of work, and with our immense passion for innovation, Ayoleeza has successfully completed numerous iconic projects, earning feathers in our caps. Our achievements are a clear reflection of our intention and dedication towards building bridges that connect people and proudly increase mobility. Our motto is to provide, establish, and help people commonly grow, making their lives better and more productive.



2006-2011

IRCON

Third Party Check on quality of works of upgradation of State Highways under RSVY in Bihar; Length-120 Kms

IIT Roorkee

Providing Assistance to IIT Roorkee for third party quality assurance under RSVY Project of CPWD. Length-1700 Kms

MPRDC

Consultancy services for supervision of civil work of Madhya Pradesh State Road Project-III (Length-404.50Km) Funded by ADB

NHAI

Independent engineer for the work of 4 laning of Rohtak Panipat section to Panipat Section of NH-71A on DBFOT Basis - on PPP mode

2012-2016

NHIDCL

Consultancy services for authority engineer for supervision for 4 laning from km 278.600 (End of Nagaon Bypass) to Km 315.315 (Kaliabor Tiniali) of NH-37 under SARDP-NE Phase -A in the State of Assam on EPC basis

NHIDCL

Consultancy Services for authority engineer for supervision for 4 laning from Biswanath Chariali to Gohpur from km 208 to Km 264.10 of NH 52 in Assam under SARDP-NE Phase 'A' project on EPC basis

RCD (Govt. of Jharkhand)

Detailed project report for 2 laning of state highways in the state of Jharkhand; Length: 126.247 Km

RCD (Govt. of Jharkhand)

Preparation of feasibility study cum detailed project report for the work of ROB including viaduct and approaches with RE wall in Chakradharpur on NH-75E in the state of Jharkhand; Length: 435m

RCD (Govt. of Jharkhand)

Preparation of feasibility study cum detailed project report for proposed ROB in lieu of existing level crossing Gate no 20/SPL/2/F near Madhupur station at Km 292.972 (from Howrah); Length: 800 mtr



RCD (Govt. of Jharkhand)

Preparation of feasibility study cum detailed project report for proposed ROB in lieu of existing RUB No. 618 (2x3.5m) RCC slab near Madhupur station at Km 292.682 (from Howrah); Length: 650 mtr

RCD (Govt. of Jharkhand)

Preparation of detail project report for 2 laning of state highway in the state of Jharkhand, Length: 33.44km

RCD (Govt. of Bihar)

Consultancy services for establishing a road inventory and condition data base in south Bihar of the state of Bihar for strengthening capacity of RCD, Govt. of Bihar, Patna under the DIFD-WB Trust Fund.

PWD (B&R), Govt. of Punjab

Authority engineer for the work widening of 2 lane with paved shoulders from Km 106.750 to Km 110.566, 114.345 to 116.00 (5.315kms) & 12m carriageway width from Km 110.566 to 113.600 (3.034km) in Sangrur City Portion of NH-64 (07) on EPC Mode.

NHAI

Consultancy services for supervision of special repair of Yamuna Nagar – Saha – Panchkula road from Km. 89.00 to Km 111.00 and Km 122.00 to Km 179.085 in the State of Haryana.

UDRP (Govt. of Uttarakhand)

Consultancy services for design and supervision consultancy (Road Works) in Uttarakhand, Package No. UDRP/PWD.C/DSC/05, funded by World Bank.

NHAI

Consultancy services for authority's engineer for supervision of project of construction of 4 laning of UP/Haryana Border- Yamunanagar- Saha- Barwala- Panchkula section of NH-73 form Km 70.830 to Km 115.400 in the state of Haryana on Engineering Procurement and Construction (EPC) Basis (Package-1)

PWD (B&R), Govt. of Haryana

Consultancy services for preparation of feasibility study cum detailed project report for 4 laning Rai Malikpur–Rajasthan Border–Narnaul–Mohindergarh–Dadri–Bhiwani on NH 148 B to Kharak on NH 709 Ext in the state of Haryana

RCD (Govt. of Jharkhand)

Consultancy services for the preparation of detailed project report for Kutmu Garu Mahuadar state highway including bridges in the state of Jharkhand. Length: 81kms.



RCD (Govt. of Jharkhand)

Consultancy services for preparation of detailed project report of FS/detailed engineering and land acquisition for NH-114A Km 224.482 to Km 308 including Giridih Bypass Road in the state of Jharkhand. Project Length: 60 Kms; Lane: 2, (Hilly Terrain)

NHAI

Consultancy services for authority's engineer for supervision of project of 2 laning with paved shoulders of Kullu-Manali section of NH-21 (Now NH-3) from Km 272.00 to Km 309.345 (Design Chainage) on EPC mode in the state of Himachal Pradesh

PWD B&R (Br.) Govt. of Haryana

Consultancy services for the work of construction of elevated road on Old National Highway-10 from Chhottu Ram Chowk to old bus stand (Km. 74.00 to 75.86) in Rohtak City Portion (on EPC Mode)

PWD (Govt. of Uttarakhand)

Consultancy services for authority's engineer for widening to two lane with geometric improvement of NH-87 Extn. (New NH-109) from Km. 35 to 45 (Khairna to Kakarighat) on EPC mode in the state of Uttarakhand

IAHE

Consultancy services for project Management Phase I including preparation of detailed project report for upgradation of Nuh – Mandkola – Palwal – Jewar – Bulandshahar Road in the state of Uttar Pradesh and Haryana for upgradation to 2/4 lane with paved shoulder configuration (Lot-IV) (Package- NH/IAHE/50)

IAHE

Consultancy services for project management Phase I including preparation of detailed project report of Rameshwar-Gangolihat-Berinag-Chaukori-Kanda-Bagheshwar-Takula-Almora of National Highway - 309A in the state of Uttarakhand for up gradation to 2/4 lane with paved shoulder configuration (Lot-IV) (Package – NH/IAHE/54)

RCD (Govt. of Jharkhand)

Feasibility study cum preparation of detailed project report for 2 laning with paved shoulder of Khuti-Tamar Road (SH-3) in the state of Jharkhand, Length- 66.20km ADB Funded

RCD (Govt. of Jharkhand)

Preparation of detail project report for 2/4 laning of state highway road in the state of Jharkhand. Length- 92.25 km & feasibility study cum detailed project report for 2 laning with paved shoulder of Gobindpur-Tundi-Giridih road in the State of Jharkhand (SH-13), ADB Funded Length – 51Km

RCD (Govt. of Bihar)

Third party quality assurance for projects under construction of bridge works along with pavement (Except Mega Projects) under BRPNL, Patna package

2017-2021

PWD (Govt. of Odisha)

Construction supervision consultant for "widening and strengthening of existing carriageway to 2 lane road with paved shoulder from Jamujhadi -Basudevpur- Dhamara road (Km. 0/0 to Km. 18/800 & Km. 22/750 to Km. 60/470) under SHDP scheme in the district of Bhadrak, in the state of Odisha

NHAI

Consultancy services for authority's engineer for supervision of 4 laning of Banihal bypass from Km 187.000 to Km 189.350 section of NH 1A in Jammu Kashmir on EPC basis

MORTH

Consultancy services for authority's engineer for supervision of widening and strengthening/ reconstruction of existing pavement to 4 lane with paved shoulders from Km 266.348 to Km 283.000 of Mahabubnagar – Jadcherla section of NH-167 in the state of Telangana on EPC basis

NHIDCL

Consultancy services for authority's engineer for supervision of improvement/ widening to 2 laning of stretch from Khongsang to Tamenglong (design length= 37.97 km) of NH-137 in the state of Manipur on EPC mode under SARDP

NHAI

Consultancy services for authority's engineer for supervision of construction of new 4 lane elevated highway (2x10.50m wide twin 2 lane structures) including approaches & service roads connecting Kazhakuttam Junction & Technopark Junction of NH-47 (New NH-66) from Km. 547.080 to Km. 549.801 in the state of Kerala under NHDP Phase-III on EPC mode

PWD (Govt. of Uttrakhand)

Consultancy services for authority's engineer of following 2 projects on EPC basis: 1. Reconstruction with geometric improvement of existing 2 lane/intermediate lane to 2 lane with paved shoulder configuration from km. 268.00 to 300.00 of NH-58 in the state of Uttrakhand under EPC mode. 2. Reconstruction with geometric improvement of existing 2 lane/intermediate lane to 2 lane with paved shoulder configuration from km. 300 to 338 of NH-58 in the state of Uttrakhand under EPC mode.

NHAI

Consultancy services For authority engineer for the balance work of 4 Laning of Dhalkola bypass (Length 5.5 Km) including ROB On NH-34 On EPC mode in the state of West Bengal.

PWD (Govt. of Maharashtra)

Consultancy services for authority engineer for supervision of rehabilitation and upgradation to 2 lane with paved shoulder/ 4 lane standards of national highway section (i) Sillod–Ajanta–Fardapur section of NH 753–F design chainage Km 60.630 to 99.660 (L=39.03 Km) & section (ii) Fardapur – Jalgaon section of NH 753 F design chainage Km 99.66 to 147.38 (L=47.720 Km) on EPC mode. length: 86.75 Kms; lane: 2/4 (Pakage 8)

PWD (Govt. of Uttrakhand)

Authority engineer for construction of 2 lane road tunnel near Dat ki Devi at km. 33/km. 34 on NH-72A (New No. 307) in the state of Uttarakhand (on EPC mode)

MSRDC (Govt. of Maharashtra)

Consultancy services for authority's engineer for supervision of rehabilitation and upgradation to 2 lane with paved shoulder / 4 lane standards of national highway section NH-65–Jahirabad Virur–(NH50)–Bhalki(NH52) Nilanga–Nitur–Latur section of NH-752K from km. 00/000 to Km. 64/936 (design chainage) (Length-64.936 km) in the state of Maharashtra under EPC mode (package 36).

MSRDC (Govt. of Maharashtra)

Consultancy services for authority's engineer for supervision of rehabilitation and upgradation to 2 lane with paved shoulder/ 4-lane standards of national highway section (i) Satara–Koregaon–Mhaswad section of NH-548c (length-85.686 km) & section (ii) Mhaswad–Tembhurni section of NH-548c (length-57.678 km) on EPC mode" (Package-37) Maharashtra.

PWD (Govt. of Kerala)

Consultancy services for authority's engineer for supervision of civil construction works for rehabilitation and up-gradation of Nh-85 (old Nh-49) from Km119/017 to Km 161/300 (design chainage Km 119/017 to Km 160/800) (Bodimettu to Munnar) to 2 Lane with paved shoulders in the state of Kerala.

PWD (Govt. of Uttarakhand)

Consultancy services for authority's engineer for supervision of following projects on EPC basis 1. Widening of existing single lane road to two lane with paved shoulders configuration from Km 235.000 to Km 268.00 of NH-58 including 560m Marine Drive viaduct portion near Byasi in the state of Uttarakhand on EPC mode

PWD (Govt. of Uttarakhand)

Consultancy services for authority's engineer for supervision of civil construction works reconstruction with geometric improvement of 2 lane to 2 lane with paved shoulder configuration from existing km 52.200 to km 92.880 of NH -125 in the state of NH-125 in the state of Uttarakhand on EPC mode under improvement of NH connectivity to Chardham.

Bengaluru Metro Rail Corporation Ltd (BMRCL)

Independent quality monitoring consultancy work for the elevated metro corridor of reach 5 P3 & reach 6 works from HSR layout to RV road and Gottigere to Swagath road cross of Bengaluru metro rail project phase-2.

MSRDC (Govt. of Maharashtra)

Consultancy services for authority's engineer for supervision of rehabilitation and up-gradation to 2 lane with paved shoulder / 4 lane standards of national highway section (i) Pandhrpur to Sangola section of NH-965c (length-34.358 km) section (ii) Sangola to Kurudwadi section of NH-965c (length-48.375 km) section (iii) Mhaswad - Pilov - Pandarpur section of NH-548e (length-53.08 km) on EPC basis." (Package-39) Maharashtra.

NHAI

Consultancy services for preparation of feasibility study/ detailed project report of selected road stretches for NH connectivity to backward/ religious/ tourist places and border areas under Bharat Mala Scheme – junction of Manakpur-Gonda Rd. with NH-30 via Manakpur-Gonda Rd. Bhabhan-(Manakpur Rd.-Swaminarayan Chhaaiya & terminating at Bhabhana rly. stn. – Haraya (NH-27) (package No. NHAI/R/20)

MORTH

Consultancy services for authority's engineer for supervision of civil construction works-reconstruction with geometric improvement of existing intermediate lane to 2 lane with paved shoulder configuration from Km 1.957 to Km 28.600 excluding Narendra Nagar bypass (km 13.800 to Km 18.550) of NH-94 in the state of Uttarakhand on EPC mode



MSRDC (Govt. of Maharashtra)

Consultancy services for authority's engineer for supervision of rehabilitation and upgradation to 2 lane with paved shoulder / 4 lane standards of national highway section NH-65-Jahirabad Virur-(NH50)-Bhalki(NH52) Nilanga-Nitur-Latur section of NH-752K from km. 00/000 to Km. 64/936 (design chainage) (Length-64.936 km) in the state of Maharashtra under EPC mode (package 36).

MSRDC (Govt. of Maharashtra)

Consultancy services for authority's engineer for supervision of rehabilitation and upgradation to 2 lane with paved shoulder/ 4-lane standards of national highway section (i) Satara-Koregaon-Mhaswad section of NH-548c (length-85.686 km) & section (ii) Mhaswad - Tembhurni section of NH-548c (length-57.678 km) on EPC mode" (Package-37) Maharashtra.

PWD (Govt. of Kerala)

Consultancy services for authority's engineer for supervision of civil construction works for rehabilitation and up-gradation of Nh-85 (old Nh-49) from Km119/017 to Km 161/300 (design chainage Km 119/017 to Km 160/800) (Bodimettu to Munnar) to 2 Lane with paved shoulders in the state of Kerala.

PWD (Govt. of Uttrakhand)

Consultancy services for authority's engineer for supervision of following projects on EPC basis 1. Widening of existing single lane road to two lane with paved shoulders configuration from Km 235.000 to Km 268.00 of NH-58 including 560m Marine Drive viaduct portion near Byasi in the state of Uttarakhand on EPC mode

PWD (Govt. of Uttrakhand)

Consultancy services for authority's engineer for supervision of civil construction works reconstruction with geometric improvement of 2 lane to 2 lane with paved shoulder configuration from existing km 52.200 to km 92.880 of NH -125 in the state of NH-125 in the state of Uttarakhand on EPC mode under improvement of NH connectivity to Chardham.

Bengaluru Metro Rail Corporation Ltd (BMRCL)

Independent quality monitoring consultancy work for the elevated metro corridor of reach 5 P3 & reach 6 works from HSR layout to RV road and Gottigere to Swagath road cross of Bengaluru metro rail project phase-2.



MSRDC (Govt. of Maharashtra)

Consultancy services for authority's engineer for supervision of rehabilitation and up-gradation to 2 lane with paved shoulder / 4 lane standards of national highway section (i) Pandharpur to Sangola section of NH-965c (length-34.358 km) section (ii) Sangola to Kurudwadi section of NH-965c (length-48.375 km) section (iii) Mhaswad - Pilov - Pandarpur section of NH-548e (length-53.08 km) on EPC basis." (Package-39) Maharashtra.

NHAI

Consultancy services for preparation of feasibility study/ detailed project report of selected road stretches for NH connectivity to backward/ religious/ tourist places and border areas under Bharat Mala Scheme – junction of Manakpur-Gonda Rd. with NH-30 via Manakpur-Gonda Rd. Bhabhan-(Manakpur Rd.-Swaminarayan Chhaaiya & terminating at Bhabhana rly. stn. – Haraya (NH-27) (package No. NHAI/R/20)

MORTH

Consultancy services for authority's engineer for supervision of civil construction works-reconstruction with geometric improvement of existing intermediate lane to 2 lane with paved shoulder configuration from Km 1.957 to Km 28.600 excluding Narendra Nagar bypass (km 13.800 to Km 18.550) of NH-94 in the state of Uttarakhand on EPC mode

NHAI

Consultancy services for preparation of feasibility study/ detailed project report of selected road stretches for NH connectivity to backward/ religious/ tourist places and border areas under Bharat Mala Scheme- Ayodhya-Chhawani-Ghanghata-Barhalganj-Barhaj-Siwan (package no. NHAI/R/25)

PWD B&R (Govt. of Punjab)

Authority engineer for construction of rail over bridge in lieu of railway crossing no. B-92/A-2 on Bathinda -Barnala Dhuri railway section at km 110/11-12 and on NH-71 (703) section Moga-Ramgarh- Barnala road at km 140.650 at Barnala in the state of Punjab

SHAJ (Govt. of Jharkhand)

Construction supervision consultancy services for improvement, and up-gradation to 2 lane/2 lane with paved shoulders of Pithoria-Thakurgaon-Burmu-Raikhelari highway (total length-37.00 KM) including construction of bridges & culverts on SBD mode in the state of Jharkhand



PWD (Govt. of Maharashtra)

Consultancy services for Authority engineer for supervision of rehabilitation and upgradation to 2 lane with paved shoulder/4 lane standards of national highway section Mehkar-Chikhli section of national highway-NH 548C(Length-39.7 km) in the state of Maharashtra under EPC Mode.

2022-2024

KRDCL (Govt. of Karnataka)

Consultancy services for proof checking of designs, project management and construction supervision for the works of "development of 31.50 Km road from devadurga-Arakera-Siravara road on state highway - 61 in Raichur district"

Road and Highway Department (Govt. of Bangladesh)

Consulting services for value addition in road safety for South Asia subregional economic cooperation Dhaka-Sylhet corridor road investment project (SP-15), Funded by ADB

Central Railway (Govt. of India)

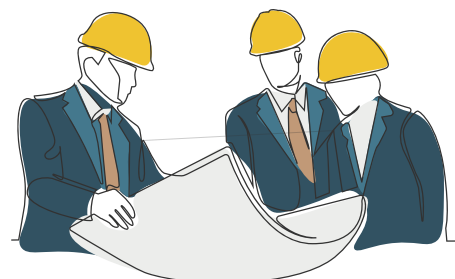
Project supervision services agency (PSSA) in Gati Shakti unit of Solapur division for Solapur (SUR), Dudhani (DUD), Shahbad (SDB), Wadi (WD), Gangapur (GUR) & Kalburgi (KLBG)

JSRRDA (Govt. of Jharkhand)

Setting up a project management unit (PMU) in JSRRDA for PMGSY-III, 2022-23 roads/bridge with supervision and monitoring & quality check of the proposed roads/bridges for upgradation.

SHAJ (Govt. of Jharkhand)

Construction supervision consultancy services for widening/strengthening and reconstruction of Barlanga-Nemra-Pirgul-Kasmar(Bahadurpur(on NH-23)-Kasmar-Kherachater upto West Bengal border) road (Length-27.608km.) into 2 lane with pave shoulder



East Coast Railway (Govt. of India)

Consultancy services for the work of: "execution of viaducts, major bridges, ROBs, protection works & other allied works between (Km.143.00 to Km.184.00 (41.00Km.apx) of Khurda-Bolangir New Rail Link Project" (PKG-III)" & "execution of roadbed (earthwork in embankment/cutting), minor bridges, RUBs, building works, laying of blanket, supply of ballast, track linking work & other allied works between (Km.143.00 to Km.184.00 i.e. 41 Km. approx.) of Khurda – Bolangir New Rail Link Project(PKG-IV)"

PWD (Govt. of West Bengal)

Consultancy services for "Panskura-Ghatal road (SH-4) from 2.00 Kmp to 33.750 Km, Widening from 2-lane road to 2-lane road with paved shoulder (10.00 m) & strengthening works under Midnapore Highway Division in the district of Paschim Medinipur & Purba Medinipur, W.B. under CRIF"

NHAI

Consultancy services of authority's engineer for supervision of construction of emergency landing facility on national highways-development of emergency landing facility on Balasore- Kharagpur section from Km 83.400 to Km 88.400 (total 5 Km) of NH-60 (New NH-16) in the state of West Bengal on EPC mode.

BRO

Project management consultancy services for construction of Leh Bypass to 4 lane specifications including LA and utility shifting on (i) Starting near Phyang village near HPCL plant and join Leh-Manali highway (NH-3) near UPSHI (58 Kms Approx) and (II) Bypass Road of Leh from NH-01 (Near Rinchen Chowk)- Shanti Stupa-Kahrdungla road junction Saboo-NH-3 (24 Km Approx) in UT Ladakh.

RCD (Govt. of Jharkhand)

Consultancy services for feasibility study for widening of existing pavement to 4 lane of Govindpur-Jamtara-Dumka-Sahebganj road on PPP mode and preparation of detailed project report for widening of the said project including construction/ widening of existing culverts, bridges and other structures, preparation of land acquisition proposal, forest diversion proposal, shifting of utility services proposal and collection of relevant data which may deem necessary for feasibility study in the state of Jharkhand

Central Railway (Govt. of India)

Project supervision services agency (PSSA) in Gati Shakti unit of Solapur division for station Pandharpur (PVR), Osmanabad (UMD) Latur (LUR) etc.



PWD (Govt. of Arunchal Pradesh)

Consultancy services for preparation of detailed project report (DPR) for decongestion/ bypass of NH-515 in Pasighat town (approx. 10Km) under road safety in the state of Arunachal Pradesh.

Central Railway (Govt. of India)

Deployment of personnel for project supervision services agency (PSSA) in Gati Shakti unit of Solapur Division (Kopergaon, Belapur, Ahmednagar, Daund, Jeur, Kurduwadi etc.) (Tender ni.16).

NHAI

Authority engineer for development of existing 2 lane NH-1 from km 8.660 to km 33.775 (Sumbal to Wayul) to 4 lane dual carriageway NH standard as part of Srinagar ring road Phase-II [design Ch. 41+907 to Ch. 66+609] under Bharatmala Pariyojna Phase-I in the union territory of Jammu and Kashmir on EPC mode.

RCD (Govt. of Jharkhand)

Package-3/corridors consultancy services for feasibility study and detailed project report for improvement and up-gradation to 2 lane with paved shoulder/4 lane configuration of corridor from (i) Jharkhand Central Corridor: Ranchi-Kathitanr-Thakurgaon-Burhmu-Tandwa-Chatra-Hunterganj Bihar Border Highway Corridor (ii) Tourist Corridor :- Milan Chowk (Silli Rangamati Road)-Sarjamdih-Tamar-Khunti-Gobindpur-Sisai-Ghagra-Netarhat-Garu-Saryu-Latehar-Herhanj-Balumath-Mcluskiganj-Chama more highway corridor in the state of Jharkhand.

South Western Railway (Govt. of India)

Appointment of authority engineer for providing project management services for the construction of a new railway line between the Chainage 39/600 & Chainage 60/000 including electrical & telecommunication works between Lokapur (excl.) & Yadwad (incl.) in Bagalkot(BGK)-Kudachi(KUD) new line project on engineering, procurement and construction (EPC) basis.

West Central Railway (Govt. of India)

Appointment of project supervision services agency (PSSA) for improvement of various passenger amenities 117 Nos. identified stations under ABSS in Kota division of West Central Railway.



Central Railway (Govt. of India)

Project supervision services at various construction sites/sections in the jurisdiction of Sr. DSTE, Solapur Central Railway.(Pkg-5)

NHIDCL

AE for widening/improvement to 4 lane with paved shoulder from km 626+030 (Nalanihulla Gaon) to Km 650+450 (Chotahapjan) on existing Tinsukia-Makum bypass of NH-15 (old NH 37) and improvement of existing NH-315 (old NH-38) from Km 0+000 (Chotahapjan) to Km 16+900 (Bogapani section) (2 lane+PS) in the state of Assam on EPC mode (Package-3), strengthening/improvement to 2 lane with paved shoulder from km 16+900 (Bogapani) to km 27+150 (Golai Goan) on existing Dibrugarh to Ledo section with proposed Digboi Bypass (Green Field and Brownfield (2 lane + PS) of NH-315 (old NH-38) in Tinsukia district in the state of Assam on EPC mode.(Package-4), strenghtening/improvement to 2 lane with paved shoulder from km 27+150 (Golai Gaon) to km 47+682 (Ledo) on existing Dibrugarh to Ledo section with proposed Digboi Bypass (Green Field and Brownfield) (2 lane + PS) of NH-315 (old NH-38) in Tinsukia District in the state of Assam on EPC mode (Package-5)

SHAJ (Govt. of Jharkhand)

Construction supervision consultancy services for reconstruction of (i) Majhgaon (MDR-185) -Dhoba-Dhobin-Echapi (Orissa Border) road (Length-21.111 Km.) and (ii) Dhoba-Dhobin-Kharpose Benisagar Road (Length-12.862) (Total-33.973 Km.)

RCD (Govt. of Bihar)

Consultancy services for preparation of detailed project report including LA and other clearances for construction of Supaul Bypass of NH-327(E) in the state of Bihar.

Central Railway (Govt. of India)

Appointment of supervisor civil engineer, P way and storekeeper etc for PSSA in Gati Shakti unit of Solapur Division (Kopergaon, Belapur, Ahmednagar, Daund, Jeur, Kurduwadi etc)



Ayoleeza Consultants Pvt. Ltd.

Unit No. B-901, 9th Floor, Urbtech Trade Centre,
Tower-B, Sector-132, Noida (New Delhi NCR) - 201304

+91 120 6025009 | +91 120 6138011

For Enquiry

info@ayoleeza.com www.ayoleeza.com

Social Media

Ayoleeza Consultants Pvt. Ltd. Ayoleeza Consultants Pvt. Ltd.

ayoleeza_consultants Ayoleeza



Scan to visit website